

# InSite™ | *L. mono* Glo

Rapid Environmental  
*Listeria* Species and  
*L. mono* Test



Hygiena's InSite *L. mono* Glo detects *Listeria* species and *L. monocytogenes* from surfaces in less than 48 hours. The dual test changes color in presence of *Listeria* species, while UV light reveals the presence of *L. mono*. The all-in-one self-contained test device reduces sample cross contamination risks that are common with other testing techniques.




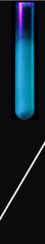

## Benefits:

- No complex lab equipment required
- Large pre-moistened sponge tip maximizes sample collection
- Neutralizing reagent minimizes sanitizer interference
- Selective enrichment media to maximize *Listeria* detection
- Easy-to-interpret color change
- UV fluorescence indicates pathogenic *Listeria*
- 24-hr presumptive positive results, 48-hr negative results
- Compatible with BAX® System Instruments as primary enrichment
- All-in-one test device reduces time, cost and labor over traditional screening methods.

## Sensitivity:

- Detects down to <10 CFU *Listeria* spp.
- Sensitive to <10 CFU *L. mono*
- Internally validated against ISO method for 100% inclusivity / 95% exclusivity
- AOAC-RI Performance Tested Method<sup>SM</sup> validation

## Interpretation of Results:

NATURAL LIGHT			UV LIGHT	
NEGATIVE	<i>LISTERIA</i> SPP.	<i>LISTERIA</i> SPP.	<i>LISTERIA</i> SPP.	<i>L. MONO</i>
—	+ spp.	+ spp.	+ spp.	+ <i>L. mono</i>
				
YELLOW	GREY	BLACK	NO FLUORESCENCE	GREEN FLUORESCENCE
	PRESUMPTIVE POSITIVE FOR <i>LISTERIA</i> SPP.		NEGATIVE FOR <i>L. MONO</i>	POSITIVE FOR <i>L. MONO</i>

Catalog No.

Description

Quantity

ILMG050

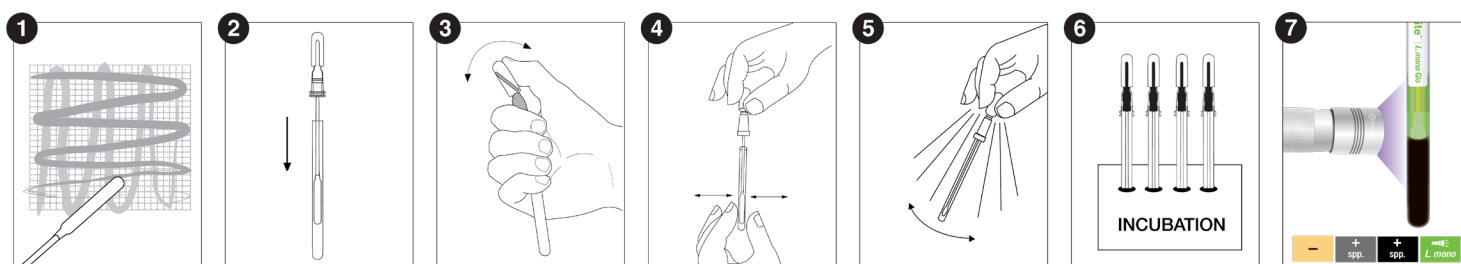
InSite *L. mono* Glo Environmental *Listeria* Species and *L. mono* Test

50



Find support documents, instructional videos, and more at [www.hygiena.com](http://www.hygiena.com)

## InSite *L. mono* Glo Procedure



See an instructional demo at [HygienaTV](#) or [HygienaTV](#)

## Related Products

### InSite *Listeria*

For facilities who do not wish to screen for pathogenic *Listeria*, Hygiena offers InSite *Listeria* which is an easy-to-use, self-contained environmental *Listeria* species test. Each device contains a chromogenic liquid media with antibiotics, growth enhancers, and color-changing compounds specific to *Listeria*.



### InSite *Salmonella*

InSite *Salmonella* is an environmental *Salmonella* species test that is self-contained, easy-to-use, and does not require expensive lab equipment. Each device contains a chromogenic liquid media with antibiotics, growth enhancers, and color-changing compounds specific to *Salmonella*.



### Digital Dry Block Incubators

Designed specifically for Hygiena test devices, our digital dry block incubators are available in two different sizes and come in multiple configurations.



### BAX® System X5 and Q7 Instruments

The BAX® System Instruments use advanced PCR technology to accurately and reliably identify foodborne pathogens in raw ingredients, finished products, and environmental samples. The automated DNA-based tests provide rapid results for 20 assays for pathogens like *Salmonella*, *Listeria*, and *E. coli*.



Catalog No.	Description	Quantity
IL050 / IL100	InSite <i>Listeria</i> Environmental <i>Listeria</i> Species Test	50 / 100
IS050	InSite <i>Salmonella</i> Environmental <i>Salmonella</i> Species Test	50
INCUBATOR	Small Format Digital Dry Block Incubator	1
INCUBATOR2	Lab Format Digital Dry Block Incubator	1
See Catalog	BAX® System X5 and Q7 Instruments	1



Find support documents, instructional videos, and more at [www.hygiena.com](http://www.hygiena.com)